



*Experience the unforgettable
beauty of Australia's Wilderness Edge*

BIBBULMUN TRACK

SELF-GUIDED WALKS

2012-2013





TOUR OVERVIEW

Our **Bibbulmun Track Self-guided Walks** are designed for independent travellers who want to enjoy the wonders of Western Australia's longest walking trail. Our self-guided packages allow you to walk at your own pace each day and return to the comfort of your fully self-contained accommodation each night. No camping, no heavy packs, no hassles!

We live in the heart of the spectacular south coast wilderness and as experienced walkers we have no doubt that the best sections of the Bibbulmun Track lie between Walpole, Denmark and Albany. We have taken all the stress out of planning your Bibbulmun Track walk by selecting a series of day hikes to suit most walkers of average fitness-level. The walks include a variety of landscapes and track grades ensuring that you get to experience the very best of the Bibbulmun Track.

Our self-guided packages include accommodation in comfortable self-catering chalets, healthy breakfasts, lunches and snacks, maps and detailed track notes, and track transfers each day. Packages are suitable for couples, families or groups of friends.

If this is your first experience walking on the Bibbulmun Track, or your first experience walking in Australia, we recommend adding in a guided walk at the beginning of your package. Your guide will provide interpretive commentary on the landscape, flora and fauna, giving you a unique insight into the history of the track and the magic of the Australian bush. He or she will also explain the possible dangers of the track. Bushwalking on remote tracks is a wonderful experience – but you need to be prepared and having a guide with you will ensure that you know what to do in an emergency situation. After a day on the trail with our guide, you'll have the confidence to tackle the remainder of the track on your own.

SELECTING YOUR ITINERARY

The itinerary has been put together to give you the flexibility of choosing a between 2 to 5 days of walking. We always include an extra night so that you can settle in to your accommodation the day before your walks and relax in comfort on the evening of your last walking day.

Walking days	Price per person (twin-share)
2 days/3 nights	\$480
3 days/4 nights	\$680
4 days/5 nights	\$880
5 days/6 nights	\$1100

Add a guided walk on the first day for an additional \$95 per person.

This package involves walks which are graded 2 (Introductory Trekking) and 3 (Moderate Trekking). The package price is the same for both itineraries – **you just need to tell us which grade of walk suits you best.**

Grade 2: Introductory Trekking

These walks involving trekking up to 6 hours per day at a slow but steady pace. Walks take place on a well defined track but may involve obstacles such as estuary crossings or easy scrambling. Hilly terrain can be expected. You will need a reasonable level of fitness and good health. We suggest that you prepare for your walk with at least 30 minutes of aerobic exercise three times per week.

Grade 3: Moderate Trekking

These walks involve trekking for up to 8 hours per day at a steady pace. Walks take place on a well defined track but may involve obstacles such as estuary crossings or easy scrambling. Hilly terrain can be expected. You will need a good level of fitness and must be in good health. We suggest that you prepare for your walk with at least 45 minutes of aerobic exercise four times per week. Hill walking with a pack is desirable.

INTRODUCTORY TREKKING

Day 1 - Karri Mountain Walk (5.7km moderately challenging)



A walk through the karri forest over granite boulders to the top of Mt Hallowell and down to Monkey Rock.

A physically challenging walk requiring balance and agility in some sections. The karri forest is beautiful at all times of the year. This walk provides a great start to your walking adventure – walk at a gentle pace to stretch your muscles and build up stamina.

Day 2 – William Bay National Park coastal walk (9.5km moderate)



A walk along the coast from Monkey Rock to Lights Beach and ending at William Bay National Park. The terrain is undulating, with sandy sections and a few hills. Enjoy walking through the spectacular coastal heathlands that abound with wildflowers and birds. The view from granite tors of Tower Hill is magnificent

At the end of this walk enjoy a dip in the pristine waters of Greens Pool, a natural ocean rock pool.

Day 3 – Conspicuous Cliffs to Peaceful Bay coastal walk (16km moderately challenging)



A stunning walk on the Bibbulmun Track affording spectacular coastal scenery. Starting on the beach, climb up the limestone cliffs to Rame Head and continue along the cliff tops to Point Irwin.

Although it is a long walk, the conditions are easy to moderate and you will be rewarded with the satisfaction of knowing that you have been able to complete a full length of the track in one day!

Day 4 – Tingle Forest Walk (9km moderate)



A walk through the ancient Tingle forest of Walpole Wilderness. Some of these trees are over 400 years old! These giants stand silently in the forest – majestic sentries that grow nowhere else in the world.

Walkers will have the opportunity to visit the Valley of the Giants Discovery Centre and Tree Top Walk, a canopy suspension bridge in the Tingle forest.

Day 5 – Shelley Beach to Lowlands coastal walk (16.5km moderate)



A walk which takes in the best rugged coastal scenery in Western Australia.

West Cape Howe is the southern-most point of Western Australia and the coastline is a mixture of dolerite and limestone cliffs. This walk departs from the Shelley Beach Lookout, with its stunning views of Torndirrup National Park in the distance.

The itinerary should be used as a guide only as it can vary due to weather, trail conditions, and unforeseen circumstances. Wilderness Getaways reserves the right to cancel, delay or alter any tour due to circumstances beyond our control, including but not limited to dangerous weather conditions, dangerous Track conditions, or the inability of a contractor to fulfil any obligations. Our experienced guides will seek out the best alternatives where necessary.

MODERATE TREKKING

Day 1 - Karri Mountain Walk and William Bay Coastal Walk (16km moderate)



A walk through the karri forest over granite boulders to the top of Mt Hallowell and down to Monkey Rock. Continue your walk along the coast from Monkey Rock to Lights Beach and ending at William Bay National Park. The terrain is undulating, with sand sections and a few hills. Enjoy walking through the spectacular coastal heathlands that abound with wildflowers and birds. The view from granite tors of Tower Hill is magnificent

Day 2 – Walpole Wilderness to Conspicuous Cliffs (20km moderate)



A walk through the ancient Tingle forest of Walpole Wilderness. Some of these trees are over 400 years old! Walkers will have the opportunity to visit the Valley of the Giants Discovery Centre and Tree Top Walk, a canopy suspension bridge in the Tingle forest (entry fee not included). Continue through the forest to the coast.

Day 3 – Conspicuous Cliffs to Peaceful Bay coastal walk (16km moderately challenging)



A stunning walk on the Bibbulmun Track affording spectacular coastal scenery. Starting on the beach, climb up the limestone cliffs to Rame Head and continue along the cliff tops to Point Irwin.

Enjoy stunning ocean views from the top of the limestone cliffs.

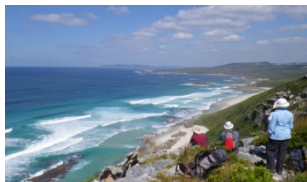
Day 4 – Shelley Beach to Lowlands coastal walk (16.5km moderate)



A walk which takes in the best rugged coastal scenery in Western Australia.

West Cape Howe is the southern-most point of Western Australia and the coastline is a mixture of dolerite and limestone cliffs. This walk departs from the Shelley Beach Lookout, with its stunning views of Torndirrup National Park in the distance.

Day 5 – Lowlands Beach to the Nullaki (16.5 km moderate)



A walk on the Bibbulmun Track from Lowlands Beach along the length of the Nullaki Peninsula.

The track meanders along the coast and affords spectacular views of the Porongurups, the Stirling Ranges, and Wilson Inlet.

The itinerary should be used as a guide only as it can vary due to weather, trail conditions, and unforeseen circumstances. Wilderness Getaways reserves the right to cancel, delay or alter any tour due to circumstances beyond our control, including but not limited to dangerous weather conditions, dangerous Track conditions, or the inability of a contractor to fulfil any obligations. Our experienced guides will seek out the best alternatives where necessary.

TOUR INCLUSIONS

- Lunch and snacks for each walking day
- Chalet accommodation with breakfast
- All transfers to and from accommodation in Denmark to the Track
- Track maps and detailed walking notes

Having the adventure of a lifetime doesn't mean roughing it. We recognise that after a day's adventure packed with new and exciting experiences, you want to relax in comfort. That's why we choose to stay in deluxe chalets with multiple guest rooms, private bathroom facilities (some with spa baths to rejuvenate your whole body), and kitchen and living areas.

Eating scrumptious healthy meals is one of the highlights of all our packages. We supply all the ingredients for a cooked and/or continental breakfast including home-made muffins. On our walking packages, you enjoy freshly made rolls and a selection of healthy snacks to keep the energy levels up. We aim to cater for all dietary needs and that's why we always ask you for information about your dietary preferences. At night you can self-cater in your fully equipped kitchen, or eat in one of Denmark's many restaurants.

TOUR EXCLUSIONS

- Travel to/from Denmark
- Items of a personal nature
- Alcoholic beverages
- Evening meals
- Optional excursions
- Personal travel insurance

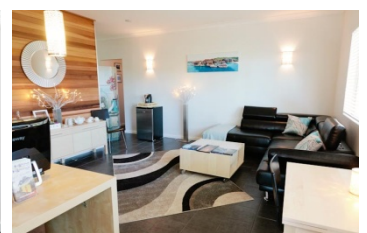
GEAR REQUIREMENTS

Walkers will need to bring a small day-pack and water for their use on the walk. We recommend that you also bring the following items with you: a hat, windproof jacket, rain-jacket and over-pants, and consider the need for a jumper or vest if the day is cool. You will need to wear hiking boots or other sturdy footwear - definitely no sandals or joggers. The coastline can get very windy even on a clear day, so the jacket is important. We also recommend sunscreen, sunglasses, fly-nets (in the warmer months) and trekking poles.

ACCOMMODATION

Tour price is inclusive of twin-share rooms in shared chalet accommodation at Karma Chalets.... nestled in the hillside under a canopy of eucalyptus. Ten exclusive chalets, each with a well-equipped kitchen, cosy living area, balcony and BBQ are available. There are different chalet configurations to choose from, including bedrooms with ensuite spa bathrooms. Karma Chalets offers the perfect country retreat to complement your Bibbulmun Walking Tour. Karma's panoramic outlook provides the ideal backdrop for you to relax with the quiet of nature at your doorstep as beautiful parrots, finches and wrens dart through the branches. Enjoy a superb local wine from one of the many wineries which surround Karma, whilst cooking on your barbeque and soaking in the spectacular views from your balcony.

And at the end of your walk, enjoy a relaxing massage or indulge in the Pamper Pod at Karisma Spa, located on the property. Guests receive a discount on all bookings.



HOW TO BOOK

1. Send us an email to - bookings@wildernessgetaways.com.au with your preferred tour length and dates. Please also indicate number of persons who wish to participate in the package.
2. We will send you a return email with the price, which may include variations if you have any particular requests outside our standard packages. We will also send you a detailed itinerary, medical form and booking form.
3. You return the completed forms to us with the 20% deposit and have your wilderness holiday confirmed.

TAILOR-MADE HOLIDAYS

In addition to our package holidays we also offer a dedicated tailor-made service where we apply our knowledge, experience and expertise to deliver a personalised nature-based holiday just for you. You simply select a combination of tours to suit your interests and a chalet and dates that meet your needs. Advise us of your individual requirements and special requests and we will assist you to plan the ultimate getaway.

OUR CUSTOMER GUARANTEE

Just like you, we love to travel. Between our different team members, we have visited every continent and over 30 different countries. And like you, we want value for money and a genuine experience. We know that when you plan a holiday you want to be assured of quality accommodation and an authentic experience. We too are worried about 'green-washing' and we know that although the brochure looks great, there's always that niggling feeling that maybe the accommodation won't be as good as it looks, or that the tour won't be as amazing as the brochure says.

Because we know what it's like to be in your shoes, we wanted to create a holiday experience that ticks all the boxes – value for money, quality guaranteed, and a fabulous time. We can guarantee the experiences that we offer, because we work in these businesses ourselves. The person who sells the package is the same person who runs the tours and operates the chalets. We know and love our region and only offer products we've tested and know will deliver quality every time.

Most importantly, our guests aren't 'nameless faces'. We spend time getting to know each person as an individual and treat them with respect and genuine interest. To achieve the high level of service that we demand, we constantly strive to deliver experiences that exceed our customers' expectations. The amazing feedback we receive is only the start of delivering on our promises. For us, the testament that we are doing things right is the enduring friendships that we have formed with our guests.